

AUTEL®

AUTEL.COM

AUTEL
TECH
SUPPORT
INDUSTRY LEADER

MAXITPMS.COM

AUTEL
LIVE CHAT
TECH SUPPORT

MAXISYSADAS.COM

Autel Introduces Most Affordable 7-Inch Tablet Service Tool

MaxiCheck **MX808** - PROFESSIONAL SCAN TOOL

**AUTO VIN
DETECTION**



EASY 2 USE
FASTER ANDROID BASED
SOFTWARE NAVIGATION

**TETHERED
OBDII CONNECTION**



**COMPLETE
SYSTEMS
DIAGNOSTICS**

**INTERNAL
BATTERY POWER**

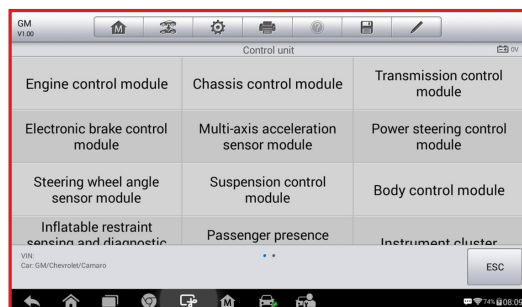


**ADVANCED
SERVICE
FUNCTIONS**



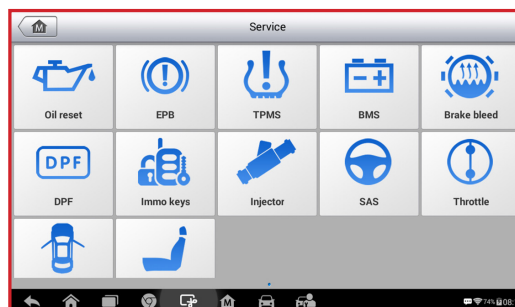
MaxiCheck MX808

MX808



ALL SYSTEM

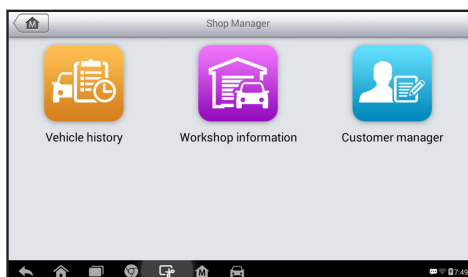
- Read / Test / Clear trouble codes all modules
- POWERTRAIN SYSTEM**
- BODY SYSTEM**
- CHASSIS SYSTEM**
- INFO & COMMUNICATION**
- Auto VIN Detection
- Auto Scan all major systems
- Live Data to test individual systems
- Communicate with door modules, body controllers, electronic modules
- Support all OBDII protocols and 10 test modes including Freeze Frame, Enhanced Mode 6, Vehicle Info, I/M Readiness, On-Board Monitor and Component Tests
- Graph, record and playback freeze frame data



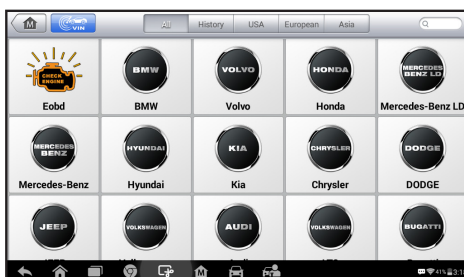
ALL SERVICE

- Read and clear trouble codes, control and test BMS / EPB / SAS / Oil Light Reset / DPF systems
- Diesel particulate / including forced regeneration
- Diagnose steering angle sensor (SAS) functionality
- Reset oil service and battery registration and BMS
- Reset Battery Monitoring System
- Resets service mileage and service intervals
- Basic TPMS service to display, test, activate sensors
- Perform OLS / oil service resets
- Set inspection 1 & 2 service intervals
- Opens and closes EPB (electronic brake calipers) for pad removal and service
- Read and clear EPB/SBC trouble codes
- Diagnose EPB/SBC (Sensorless Brake Control) caliper functionality with bi-directional control
- Read and erase trouble codes (generic & manufacturer, pending and stored)
- Perform O2 monitor, on-board monitor, I/M readiness and component testing

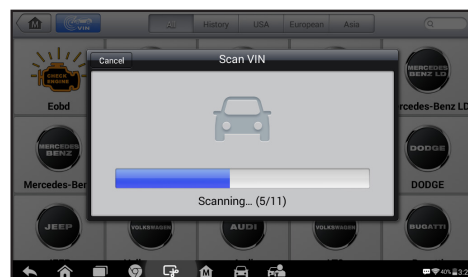
DIAGNOSTIC FEATURES



SHOP MANAGER

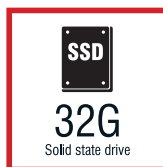
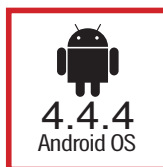
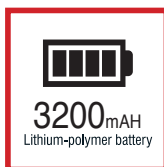
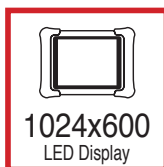
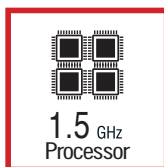


EXTENSIVE VEHICLE COVERAGE



AUTO VIN SCAN

HARDWARE SPECIFICATIONS



OPERATING SYSTEM	Android™ 4.4.2 KitKat OS
PROCESSOR	1.5GHz Quad-Core Processor
MEMORY	1GB RAM DDR3 / 32GB On-board ROM Memory
DISPLAY	7-inch LED capacitive touch screen with 1024 x 600 resolution
CONNECTIVITY	<ul style="list-style-type: none"> • WiFi (802.11 a/b/g/n) • Mini USB 2.0 • Micro SD Card (Support up to 32GB) • USB: 2.0
BATTERY	3200 mAh 3.7 V lithium-polymer battery / 4.5 hour continuous battery life
POWER	Charging via 5 VDC power supply - 5 V (1.5A) Input Voltage
AUDIO INPUT/OUTPUT	<ul style="list-style-type: none"> • Microphone • 4-Band 3.5 mm stereo/standard headset jack • Dual Speakers
POWER CONSUMPTION	500 mA (LCD on with default brightness, Wi-Fi on) @3.7 V
OPERATING TEMP	-10 to 60°C (14 to 140°F)
STORAGE TEMP	-20 to 70°C (-4 to 158°F)
HOUSING	Strong plastic housing with protective rubber boot
DIMENSIONS	237.8 mm (9.4") x 148.6 mm (5.9") x 35.5 mm (1.4")
NET WEIGHT	788 g (2.42 lb)

AUTEL.COM UPDATES PROVIDES THE LATEST SOFTWARE AND DIAGNOSTICS

2 YEAR WARRANTY / 2 YEARS FREE UPDATES

REGISTER AND UPDATE TOOLS UPON PURCHASE TO GUARANTEE LATEST VEHICLE COVERAGE

PART#

DESCRIPTION

MX808

MX808 Head Unit, OBDII Cord, Charging Cord, User Manual, Carry Case